



THE NURSING EDUCATION XCHANGE

# Annual Update 2015

[www.winnexus.org](http://www.winnexus.org)

## Members

### Academic Collaborators

- Arizona State University
- Case Western Reserve University
- Idaho State University
- Loma Linda University
- Oregon Health & Science University
- The Ohio State University
- The University of Iowa
- The University of Texas at Tyler
- University at Buffalo
- University of California, San Francisco
- University of Colorado
- University of Hawaii at Manoa
- University of Kansas
- University of New Mexico
- University of Nevada Las Vegas
- University of Northern Colorado
- University of Utah
- Virginia Commonwealth University
- Washington State University

### Academic Affiliates

- The University of Oklahoma

*"Because of NEXus and the NEXus courses I've been able to take, I'm much more well rounded; I think I have a better resume."*

## What is NEXus?

NEXus is a partnership among select universities offering doctoral programs in Nursing (PhD and DNP) that provide opportunities for students at one academic collaborating institution to take a course/s or a series of related courses in a cluster, from another academic collaborating institution.

The overall goal of NEXus is to address the nursing shortage by educating well-prepared nurse educators through application of distance accessible delivery methods, enabling rural nurses to remain in their home communities and be employed in rural nursing education programs.

NEXus offers two types of membership, the Academic Collaborator and the Academic Affiliate. An Academic Collaborator is a School/College of Nursing that participates in NEXus as both a

teaching institution and a home institution. An Academic Affiliate is a School/College of Nursing that participates in NEXus solely as a home institution and does not offer shared courses through the exchange.

NEXus is currently accepting applications for membership.

### Fees:

#### Academic Collaborators

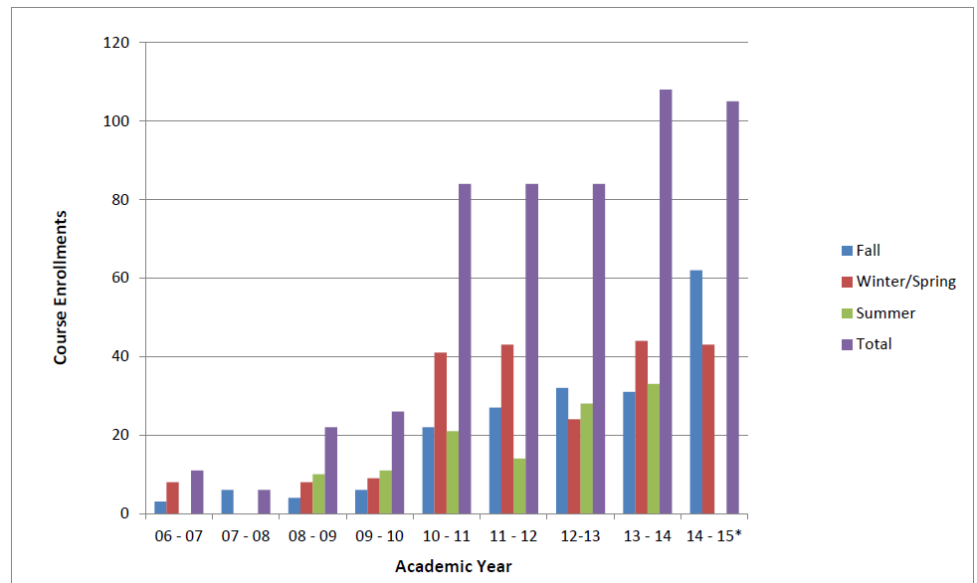
Annual Dues \$5,000

#### Academic Affiliates

Annual Dues \$6,000

- First-year New Member Premium \$1,000
- Add \$1,000 for each additional program per institution.

## Proof that NEXus is Working



\*Course enrollments through Spring 2015.



THE NURSING EDUCATION XCHANGE

[www.winnexus.org](http://www.winnexus.org)

### The Course Exchange

Member schools identify courses to offer through the online course Xchange. Courses are clustered by area of interest to assist students and their advisors in selecting the best match that can serve as an elective in the student's program of study or possibly substitute for a required course for an off-time student. Numerous courses are open to both PhD and DNP students, further enriching the doctoral education experience.

### Active Clusters

- Advanced Nursing Practice\*
- Children, Parents and Family
- Chronic and Disabling Conditions and Palliative Care
- Diverse and Vulnerable Populations
- Ethics and Interprofessional Collaboration\*
- Gerontology and Geriatric Nursing
- Nursing Education
- Nursing Knowledge: Theory, Philosophy and Science
- Research Methodology
  - ◊ Qualitative Research Methods
  - ◊ Quantitative Research Methods
  - ◊ Mixed Methods
- Scholarship and Writing
- Scientific Underpinnings for Advanced Nursing Practice\*
- Systems, Leadership, Informatics and Policy

\*DNP Specific

# Annual Update 2015

## Proof that NEXus is Working (cont.)

Surveys indicate that NEXus is meeting project goals, is serving student needs, and is working. For Fall 2014 term, 59 students enrolled in 62 courses. Thirty-one of the 59 students completed the survey.

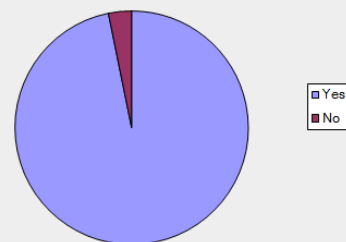
Results as follows:

97% of the students reported the course was not available at their home institution.

The top 3 reasons students would recommend NEXus:

- Variety of courses available;
- Diversity in faculty philosophies and teaching styles;
- Opportunity to network with other students and faculty.

Did the NEXus course you took this term facilitate your remaining "on time" in your progression through your program of study?



### Currently, NEXus

Has over 200 active courses in WICHE-ICE;

Is enrolling for Summer and Fall 2015;

Is adding members nationwide (newest are Case Western Reserve University, The Ohio State University, The University of Iowa, and University of California, San Francisco)

Offers courses to both DNP and PhD students;

Is implementing strategic marketing plan and

Is a sustainable operation.

### Innovations

2015 Nursing Education Summer Seminars

National Hartford Centers of Gerontological Nursing Excellence Collaboration

### 2014—2015 Posters and Presentations

2015 American Association of Colleges of Nursing (AACN) Annual Doctoral Education Conference

48<sup>th</sup> Annual Western Institute of Nursing (WIN) Communicating Nursing Research Conference

41<sup>th</sup> Annual Meeting National Organization of Nurse Practitioner Faculties (NONPF)

39<sup>th</sup> Annual Midwestern Nursing Research Society (MNRS) Research Conference

26<sup>th</sup> Annual WICHE Cooperative for Educational Technologies (WCET) Meeting

### Publications

Lobo, M.L., Haas, B.K., Clark, M.C., & McNeil, P.A. (2014) NEXus: Evaluation of an Innovative Educational Consortium for Doctoral Education in Nursing. *Journal of Professional Nursing*. In Press DOI: <http://dx.doi.org/10.1016/j.profnurs.2014.07.005>

# NEXUS

THE NURSING EDUCATION XCHANGE

[www.winnexus.org](http://www.winnexus.org)

Summer 2015  
Nursing Education  
Seminars:  
Cybertechnology in  
Nursing Education

These unique 1 semester  
credit seminars are open to  
both PhD and DNP students.

Seminar #1 NUR 691  
Foundations of Cybertechnology  
May TBA – June TBA, 2015  
offered by  
Arizona State University (ASU)

Seminar #2 NURS 6960 Enhanced  
Cyberpedagogy  
June 25 – August 5, 2015  
offered by  
University of Utah (UTAH)

Enroll in 1 or both seminar  
courses! For detailed infor-  
mation on course descriptions,  
registration, and enrollment  
visit [www.winnexus.org](http://www.winnexus.org)

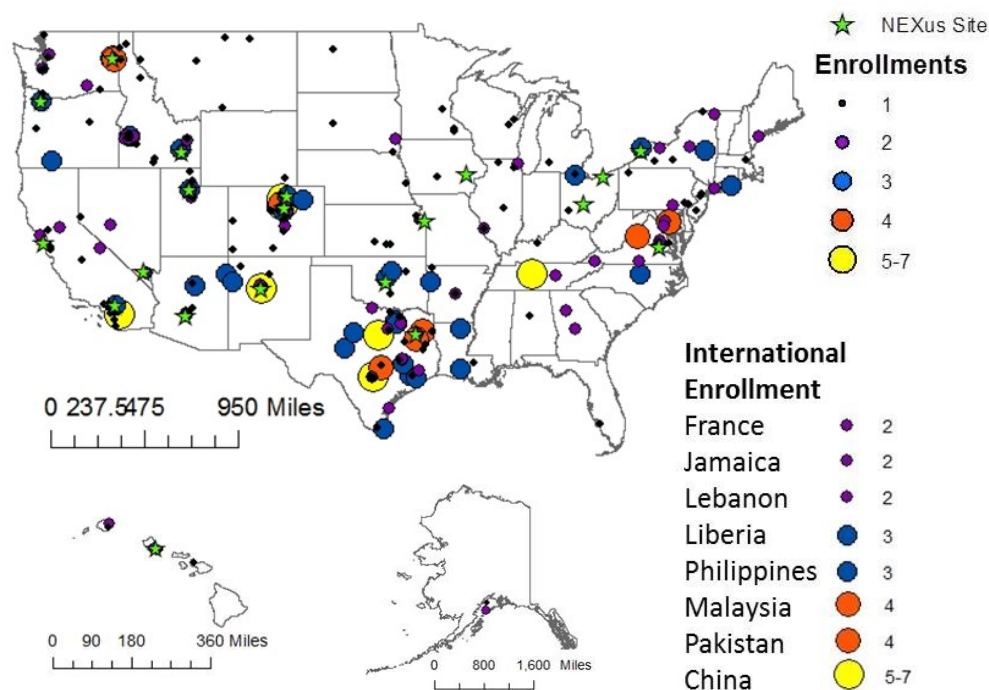
## Contact NEXus

3455 SW Veterans Hospital Rd  
Portland, OR 97239-2941  
Phone: (503) 494-7671  
FAX: (503) 494-3691

Email: [nexus@ohsu.edu](mailto:nexus@ohsu.edu)

# Annual Update 2015

## Xchange course enrollments continue to grow



## Students enrolled in NEXus courses are graduating

Year	Doctoral Degrees Awarded
2009	1
2010	4
2011	15
2012	24
2013	22
2014	20*
Total	86

\*through Summer 2014

Students from NEXus member institutions are completing their respective degrees and graduating. Of the eighty-six graduates, 60 are PhD students and 25 are DNP students.

Here's what students are saying... "I had an opportunity to study with an expert in the field. I would not have had that opportunity without NEXus. Thank you!"

"My school needs NEXus to facilitate electives. It creates a wonderful opportunity and less stress for us to find electives. I can't imagine how electives would be found without NEXus."

# NEXUS

THE NURSING EDUCATION XCHANGE

[www.winnexus.org](http://www.winnexus.org)

## The Executive Committee

### Chair

Barbara Haas, PhD, RN

### Vice Chair

Suzanne S. Dickerson, DNS, RN

### Treasurer

Pauline Kommenich, PhD, RN

### Secretary

Paula Meek, PhD, RN, FAAN

### At Large Members

Cynthia S. Teel, PhD, RN, FAAN

Marie L. Lobo, PhD, RN, FAAN

Michele C. Clark, RN, PhD

Margaret F. Clayton, PhD, APRN-BC

Roxanne Vandermause, PhD, RN

Sandra LeVasseur, PhD, RN

Mary Nies, PhD, RN, FAAN, FAAHB

Patricia Pothier, PhD, RN

Jo Azzarello, PhD, RN

Kristine Williams, PhD, RN, FGSA, FAAN

David P. Hrabe, PhD, RN

Evanne Juratovac, PhD, RN (GCNS-BC)

Rhonda Squires, PhD, FNP

Suzanne Ameringer, PhD, RN

Amy Ross, PhD, RN, CNS

Lisa Lommel, RN, MS, MPH, FNP

### WIN Representative

Charlene Winters PhD, ACNS-BC

\*\*\*\*\*

### NEXus Administration

Paula McNeil, RN, MS

Anna Galas, MS

Leah Brandis, RD, CSG, LD

# Annual Update 2015

## NEXus welcomes 4 new member institutions in 2014

Case Western Reserve University was the first institution through the National Hartford Centers of Gerontological Nursing Excellence Collaboration (NHCGNE) and the 17th overall member to join NEXus on March 29, 2014. Mary E. Kerr, PhD, RN, FAAN Dean and May L. Wykle Endowed Professor stated she is pleased about this endeavor.

On December 5, 2014, NEXus welcomed The Ohio State University (OSU), the second institution joining through NHCGNE. Then on December 22, 2014, NEXus members voted unanimously to accept the memberships of The University of Iowa (Iowa) and the University of California, San Francisco (UCSF). The addition of these institutions brings NEXus membership to a total of twenty. All of these member institutions joined NEXus as Academic Collaborators that

will both enroll students and offer courses within the NEXus Xchange. NEXus Project Director, Paula McNeil, commented, "We are so pleased to welcome our colleagues joining through the new collaboration with NHCGNE. The new members will bring exciting courses to enrich the course catalogue, and are already collaborating on new and needed courses. We welcome their administrative teams, faculty and most all, their students to NEXus!"



\*Photo of Frances Payne Bolton School of Nursing at Case Western Reserve University

## Historical timeline of member institutions joining NEXus.

